



# LEFROY BROOKS

1 8 2 8 T R O U T M A N S T R E E T  
R I D G E W O O D N E W Y O R K N Y 1 1 3 8 5 U S A  
T: +1(718) 302 5292 F: +1(718) 302 4177

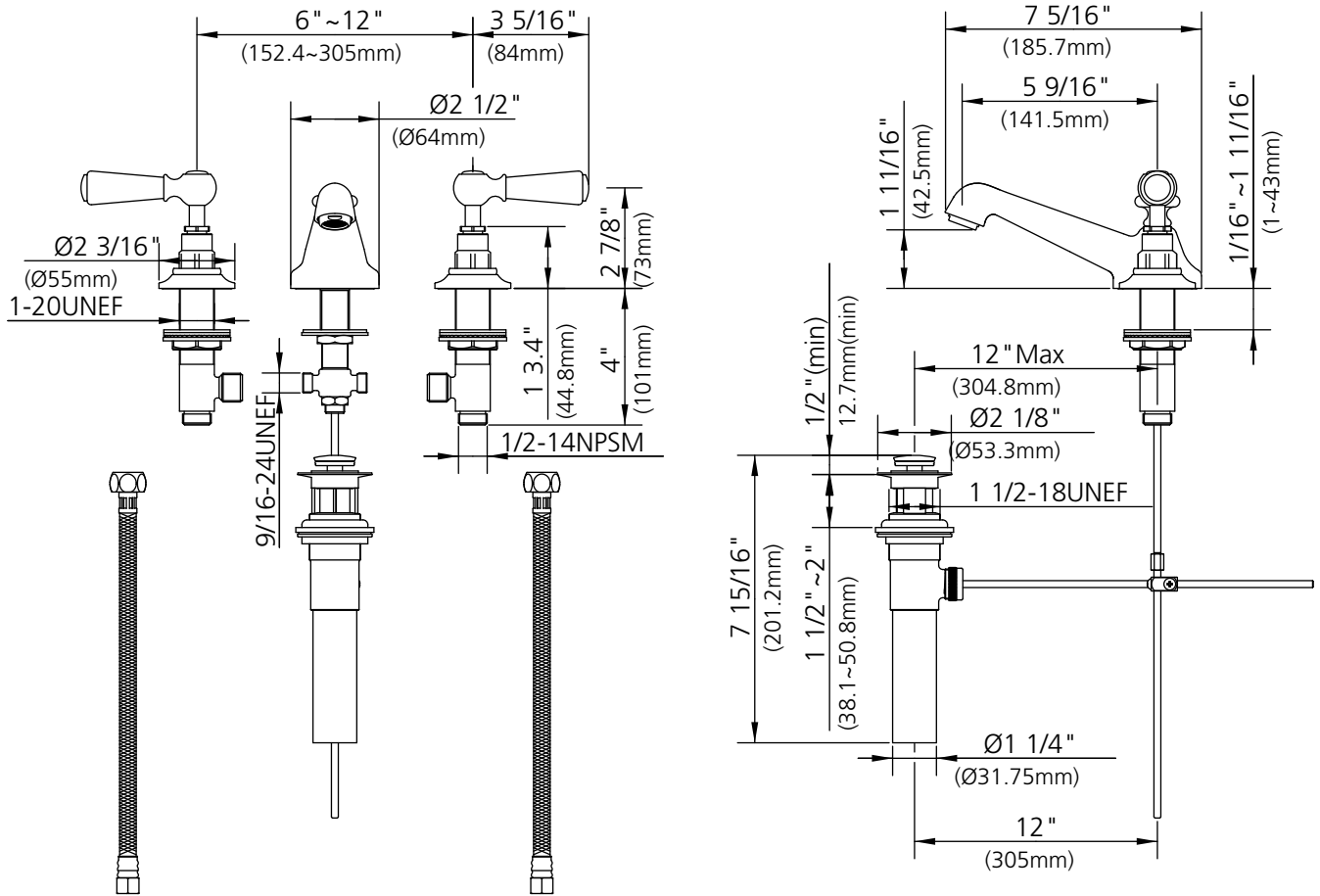
## CW-1050 (WL1220)

WHITE LEVER 3-HOLE BASIN MIXER WITH POP-UP WASTE

### DIMENSIONAL DATA SHEET

DATE: 1 July 2009

No: FW2B6202



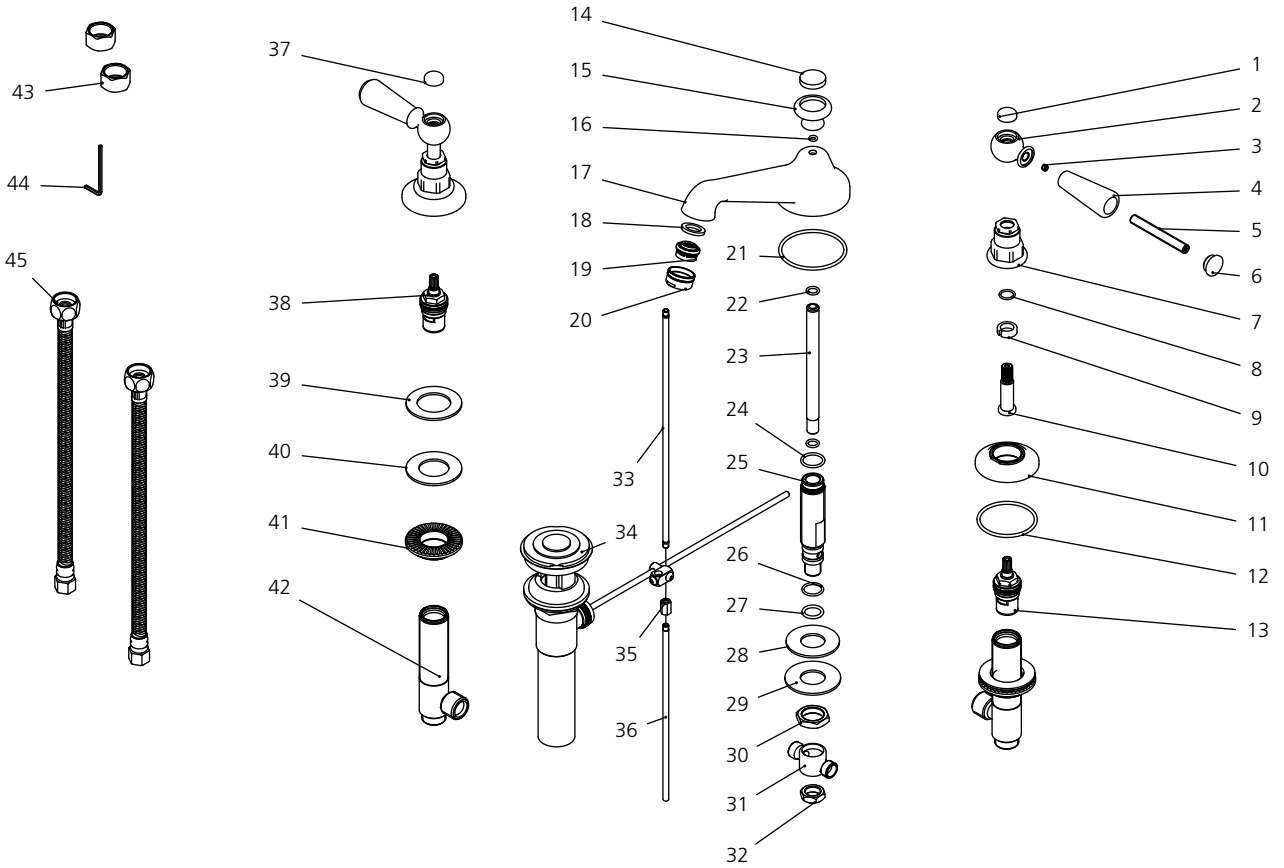
©COPYRIGHT 2009. CHRISTO LEFROY BROOKS. ALL RIGHTS RESERVED.

DIMENSIONS IN INCHES & MILLIMETRES

WHILST EVERY EFFORT IS MADE TO ENSURE THE ACCURACY OF THESE DATA SHEETS THEY ARE SUBJECT TO CHANGE WITHOUT NOTICE AS PART OF THE COMPANY'S PRODUCT DEVELOPMENT PROCESS

# CW-1050 (WL1220)

WHITE LEVER 3-HOLE BASIN MIXER WITH POP-UP WASTE



- |    |                                    |    |                           |    |                                    |
|----|------------------------------------|----|---------------------------|----|------------------------------------|
| 1  | Ceramic cap ( C ) (129313C)        | 16 | O-ring (048044)           | 31 | Connector (015001N)                |
| 2  | Adaptor (205144)                   | 17 | Spout (002695W)           | 32 | Nut (009002)                       |
| 3  | Set screw (075052)                 | 18 | Oil-seal (010018N)        | 33 | Pop-up rod (125412)                |
| 4  | Handle sleeve (108924)             | 19 | Aerator insert (553000N)  | 34 | Pop-up sub-assembly (556781)       |
| 5  | Handle stem (017094)               | 20 | Aerator housing (305668W) | 35 | Adaptor (077125)                   |
| 6  | Handle-end cap (109376)            | 21 | O-ring (072022)           | 36 | Pop-up rod (110041)                |
| 7  | Canopy (018220)                    | 22 | O-ring (004001N)          | 37 | Ceramic cap ( H ) (129313H)        |
| 8  | O-ring (048085)                    | 23 | Steel tube (051559)       | 38 | Cartridge assembly ( H ) (507175n) |
| 9  | Clip (012242)                      | 24 | O-ring (004043N)          | 39 | Oil-seal (010017)                  |
| 10 | Spindle (110461)                   | 25 | Connecting tube (014016W) | 40 | Washer (013158)                    |
| 11 | Bezel (215486)                     | 26 | O-ring (004115N)          | 41 | Nut (009834)                       |
| 12 | O-ring (004627)                    | 27 | O-ring (004005N)          | 42 | Side body (061893W)                |
| 13 | Cartridge assembly ( C ) (507176N) | 28 | Washer (060041)           | 43 | Spare parts (504003)               |
| 14 | Ceramic cap (129312)               | 29 | Washer (013202)           | 44 | Allen wrench (031000)              |
| 15 | Pop-up knob (124408)               | 30 | Nut (009009)              | 45 | Flexible hose (105750N)            |